

GAOLIN ELECTRONICS

3U BACKPLANE WITH POWER CONNECTOR

Technology Specification

CB3001A01-000

Issue Date: 2013-05-18

CPCI 3U POWER CONNECT SWITCH BACKPLANE

Technology Specification

DESIGN ACCORDING TO:

- CPCI System Management Specification PICMG 2.9 R1.0 (February 2, 2000)
- CPCI Power Interface Specification PICMG 2.11 R1.0 (October 1, 1999)

BUS STRUCTURES:

Slot	PCIHC47	ATX PSU
SPEC		Receptacle

TECHNICAL DATA:

- Mechanical dimension: 128.7 × 39.64 × 3.6mm (width × height × thickness), support 3U card;
- PCB Type: 4 layer,
- Power connector: One ATX Power ,One PCIH47
- Maximum voltage drop on backplane power: <20mV
- Operating temperature: -40°C ~ +85°C
- Storage temperature: -55°C ~ +85°C
- MTBF: 700,000h

Backplane Connector Description

Optional Power Taps :

The optional power taps are for +5V, 3.3V, +12V, -12V.

I2C:

System Management.

Pin	Signal	Pin	Signal
1	IPMB_PWR	2	NC
3	IPMB_SDA	4	NC

5	IPMB_SCL	6	NC
7	GND	8	GND
9	GND	10	GND

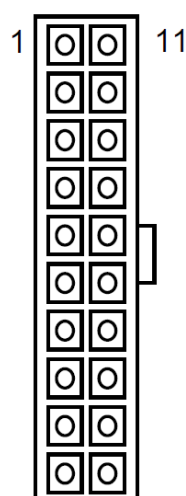
Volt:

All the alarm signals and various power supply are connected to it. It is used to connect external monitor module.

Pin	Signal	Pin	Signal
1	-12V	2	NC
3	+12V	4	DEG#
5	3.3V	6	FAL#
7	5V	8	GND
9	INH#	10	GND

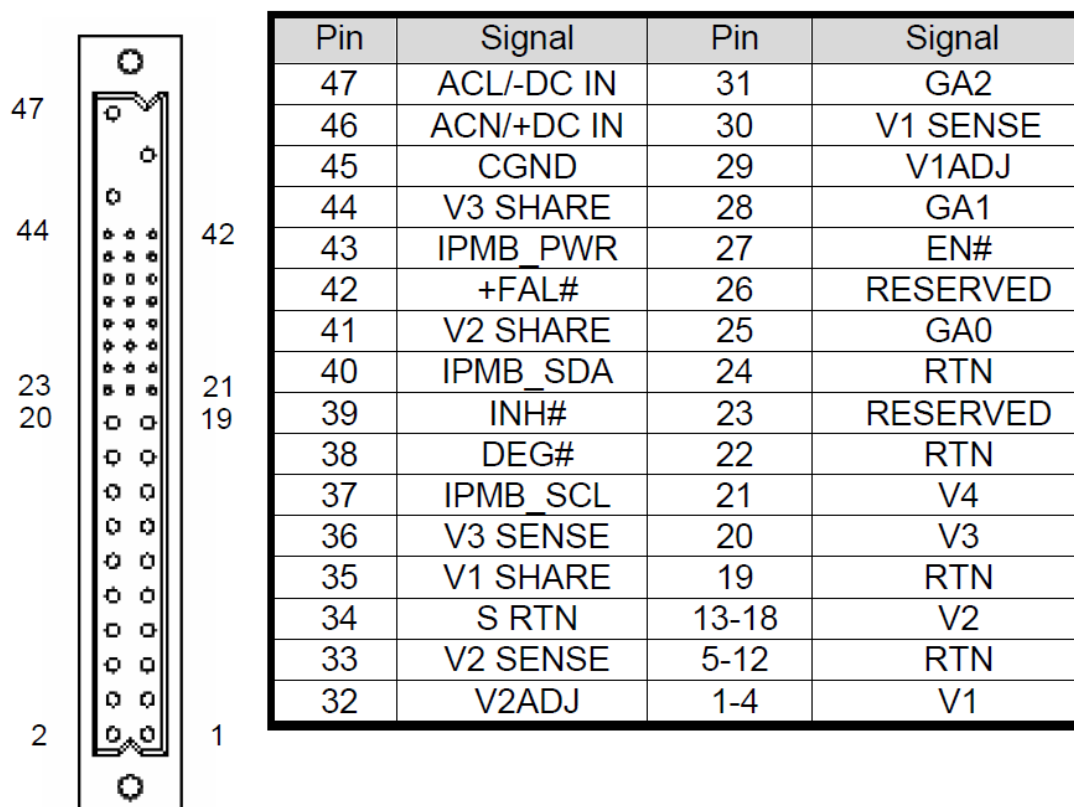
INPUT: 输入端

Pin	Signal	Pin	Signal	Pin	Signal
1	ACL/-DC	2	ACN/+DC	3	CGND

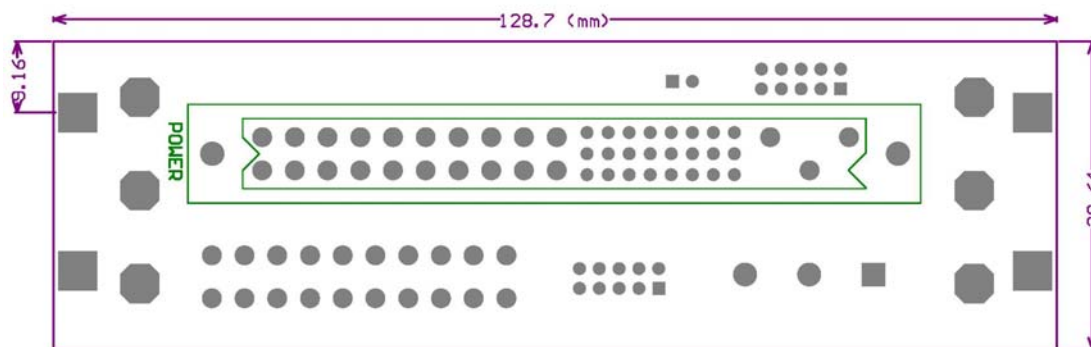
XP1: ATX Power Connector


Pin	Signal	Pin	Signal
1	+3.3V	11	+3.3V
2	+3.3V	12	-12V
3	GND	13	GND
4	+5V	14	PS_ON_L
5	GND	15	GND
6	+5V	16	GND
7	GND	17	GND
8	POWER GOOD	18	-5V
9	5V STB	19	+5V
10	+12V	20	+5V

POWER: Modular Power 47P Connector



BACKPLANE 正面视图



BACKPLANE 反面视图

